

5% Commission to Procuring Broker!!



**FOR LEASE FREEWAY CLOSE WAREHOUSE
11290 SUNRISE GOLD CIRCLE
RANCHO CORDOVA, CA 95742**

Availability:

Suite A/B - 5,300 sq. ft. including 1,592 sq. ft. of office/restroom and 3,708 sq. ft. of warehouse - \$2,333/month (\$.44psf blended) + CAM

Suite C - 2,100 sq. ft. including 64 sq. ft. of restroom and 2,036 sq. ft. of warehouse - \$754.20/month (\$.36psf blended) + CAM

Suite F - 2,100 sq. ft. including 412 sq. ft. of office/restroom and 1,688 sq. ft. of warehouse - \$853.22/month (\$.41psf blended) + CAM

Suite K - 2,100 sq. ft. including 328sq. ft. of office/restroom improvements and 1,772 sq. ft. of warehouse - \$833.40/month (\$.40psf blended) + CAM

Common Area Maintenance Fees (CAM) - \$.07psf/month

Features:

- 12' X 12' Roll-up door
- 14' to 16' Clear height
- Ample parking / Easy access
- 110/208 volt 3 phase power
- Front loading units

FOR FURTHER INFORMATION CONTACT:

Dennis Vollman

dvollman@thevollmancompany.com

Dan Mincher

dmincher@thevollmancompany.com

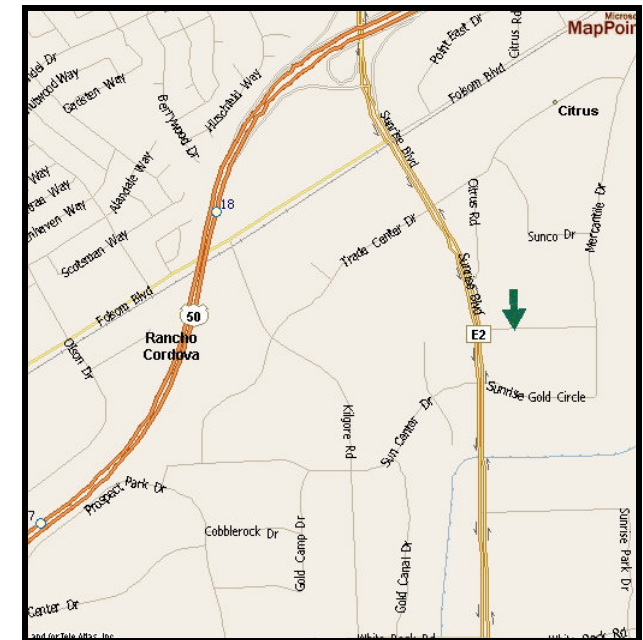
Josh Carpenter

jcarpenter@thevollmancompany.com

Don Deavens

ddeavens@thevollmancompany.com

(916) 929-2000



THE VOLLMAN COMPANY, INC.
COMMERCIAL REAL ESTATE BROKERAGE
1900 POINT WEST WAY, SUITE 161
SACRAMENTO, CA 95815-4706
916/929-2000 FAX 916/929-7857
www.thevollmancompany.com

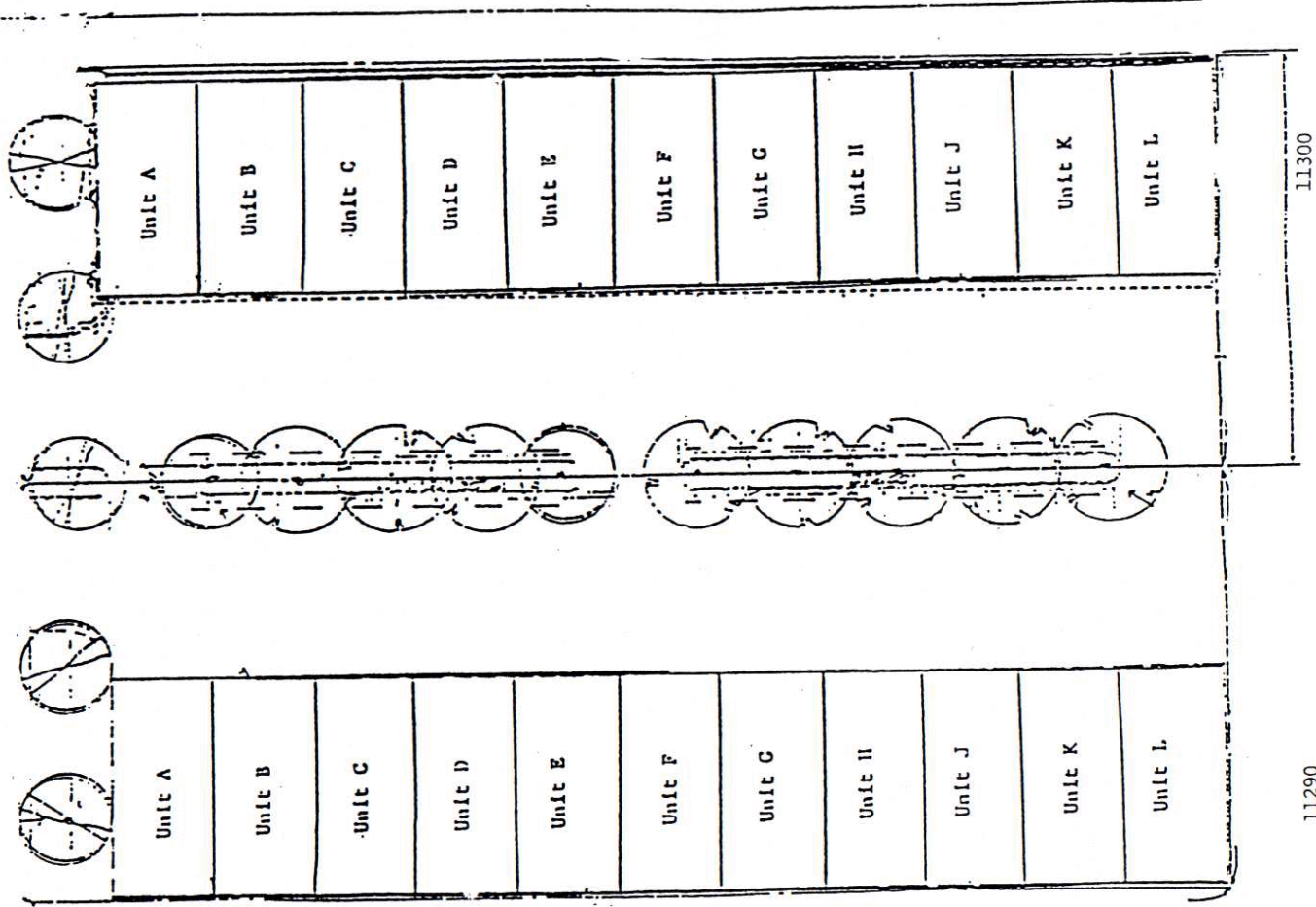
License # 00915268

For additional information about this or our other properties please visit our website at www.thevollmancompany.com
THE ABOVE INFORMATION, WHILE NOT GUARANTEED, HAS BEEN SECURED FROM SOURCES WE BELIEVE TO BE RELIABLE

SUNRISE GOLD CIRCLE

11300

11290



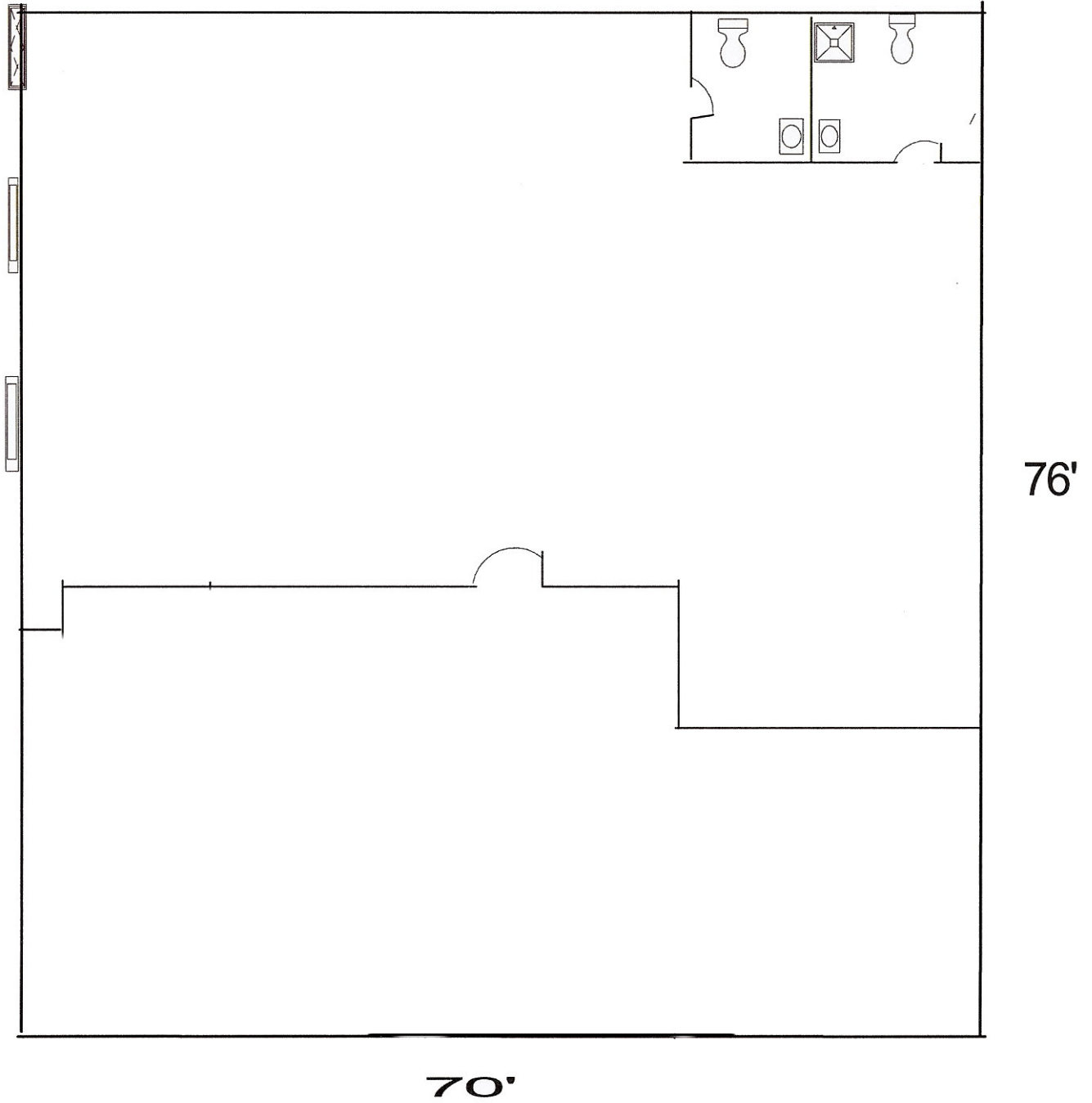
11300 Sunrise Gold Circle

11290 Sunrise Gold Circle

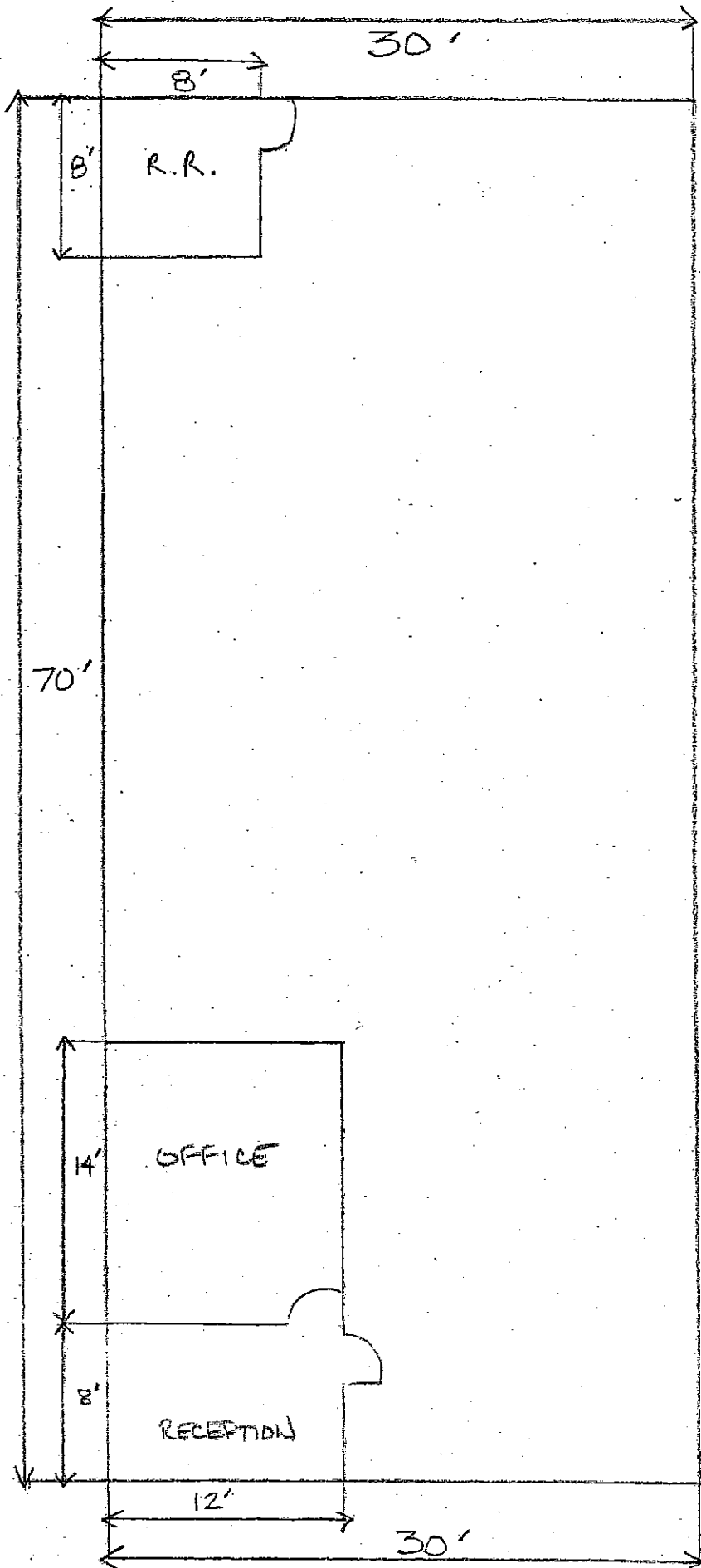
11300

11290

Suite A/B



11290 Sunrise Gold Circle



11290
 SUNRISE GOLD CIRCLE
 SUITE K

2,100 sq
 264 sq OFFICE
 64 sq R.R.
 1,772 sq WAREHOUSE
 (measurements are approx.)

AMENITIES

- Beautiful office w/
 sand colored walls,
 cherry doors,
 wall HVAC &
 tinted storefront glass
- Bright white walls
 in warehouse
- LOW CAM'S \$0.07 ^{modified} _{gross}

READY TO
 OCCUPY

