

SERVICE-RETAIL PROPERTY FOR LEASE

801-805 EAST STREET, WOODLAND, CA 95776



Description:

12,524 sq. ft. of warehouse - \$.20psf (\$2,400.00/month)

2,400 sq. ft. of service-retail - \$.50psf (\$1,200.00/month)

4,980 sq. ft. of vehicle service bays - \$.50psf (\$2,490.00/month)

8,033 sq. ft. of open canopy area - \$.10psf (\$803.30/month)

73,220 sq. ft. of fenced yard area - \$.02psf (\$1,464.40/month)

Total monthly base rent \$8,357.70 (\$3.18psf of building area)

NNN/CAM/OE costs are estimated to be \$.036psf of building area (\$930.00)

CONTACT:

DENNIS VOLLMAN

dvollman@thevollmancompany.com

(916) 929-2000



The Vollman Company, Inc.
Commercial Real Estate Brokerage
1900 Point West Way, Suite 161
Sacramento, CA 95815
(916) 929-2000
(916) 929-7857 fax
www.thevollmancompany.com



EAST STREET



CREATED	DIMENSIONS	AREA (SQ. FT.)	USE
1. NOR-CAL	74'-0" x 78'-0"	5772	5,772 sq. ft.
2. BILL LUMBER AND SOFT WARE	24'-0" x 100'-0"	2400	2,400 sq. ft.
3. BILL LUMBER AND SOFT WARE	58'-0" x 64'-0"	3,712	3,712 sq. ft.
4. BILL LUMBER AND SOFT WARE	63'-0" x 79'-6"	5009	5,009 sq. ft.
5. BILL LUMBER AND SOFT WARE	100'-0" x 100'-0"	10000	10,000 sq. ft.
6. CANOPY	11'-0" x 13'-0"	143	143 sq. ft.
7. BILL LUMBER AND SOFT WARE	63'-0" x 83'-0"	5230	5,230 sq. ft.
8. BILL LUMBER AND SOFT WARE	40'-0" x 83'-0"	3320	3,320 sq. ft.
9. SYSTEMS RESEARCH	55'-0" x 100'-0"	5500	5,500 sq. ft.
10. STORAGE	55'-0" x 78'-0"	4290	4,290 sq. ft.
11. STORAGE	10'-0" x 20'-0"	200	200 sq. ft.
12. STORAGE	10'-0" x 20'-0"	200	200 sq. ft.

STORAGE TANKS (NOR-CAL)

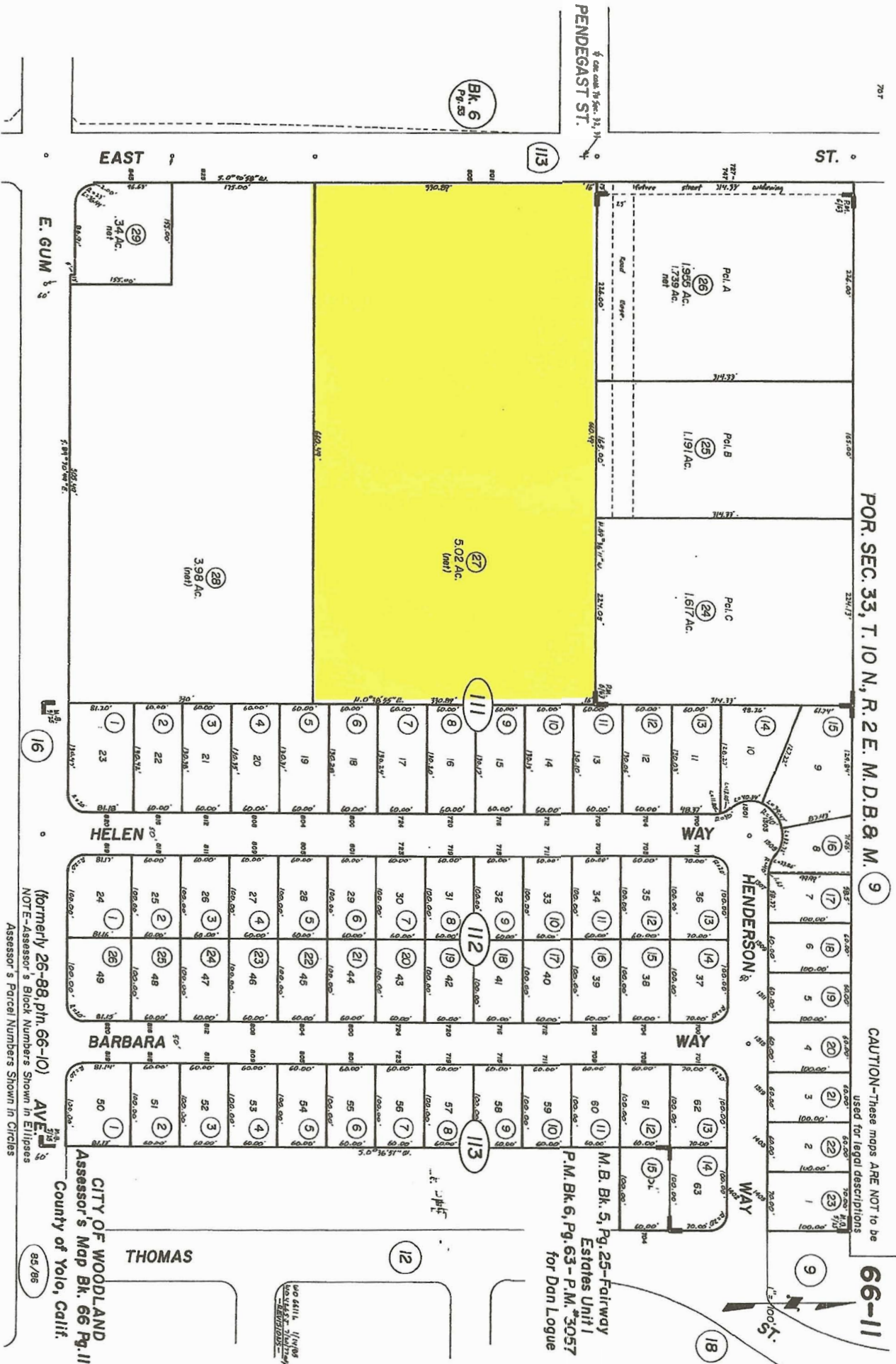
- 20,000 GAL.
- 20,000 GAL.
- 20,000 GAL.
- 20,000 GAL.
- 20,000 GAL.
- 10,000 GAL.

AREA: 28'-6" x 37'-3" (78' x 75') = 1296 sq. ft.

AREA: 11'-0" x 34'-0" = 374 sq. ft.

200 x 24' x 6" STORAGE TANKS = 73,720

DATE	11/11/11
BY	J. W. [unclear]
CHECKED	[unclear]
SCALE	AS SHOWN
PROJECT	STORAGE TANKS
OWNER	STORAGE TANKS
DESIGNER	STORAGE TANKS



POR. SEC. 33, T. 10 N., R. 2 E. M. D. B. 8. M. 9

CAUTION—These maps ARE NOT to be used for legal descriptions

66-11

M. B. Bk. 5, Pg. 25—Fairway Estates Unit 1 P.M. Bk. 6, Pg. 63 - P.M. 3057 for Dan Logue

(formerly 26-98, ph. 66-10) Assessor's Parcel Numbers Shown in Circles

CITY OF WOODLAND Assessor's Map Bk. 66 Pg. 11 County of Yolo, Calif.

95/96

