

FOR LEASE - 2,600 SQ. FT. RETAIL SPACE



9203 Folsom Blvd.
Sacramento, CA 95826
APN 075-0600-034

2 Tenant Building
Suite B - 2,600 sq. ft.

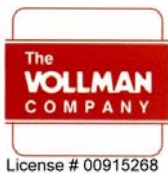
20 Parking Spaces

\$1.25psf/month
NNN = 22¢/psf/month

Owner Will Sell Bike Business
Call Broker for Details

Traffic Counts:

Over 28,000 cars a day on Folsom Blvd.
Over 184,000 cars a day on Hwy. 50



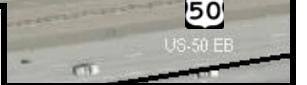
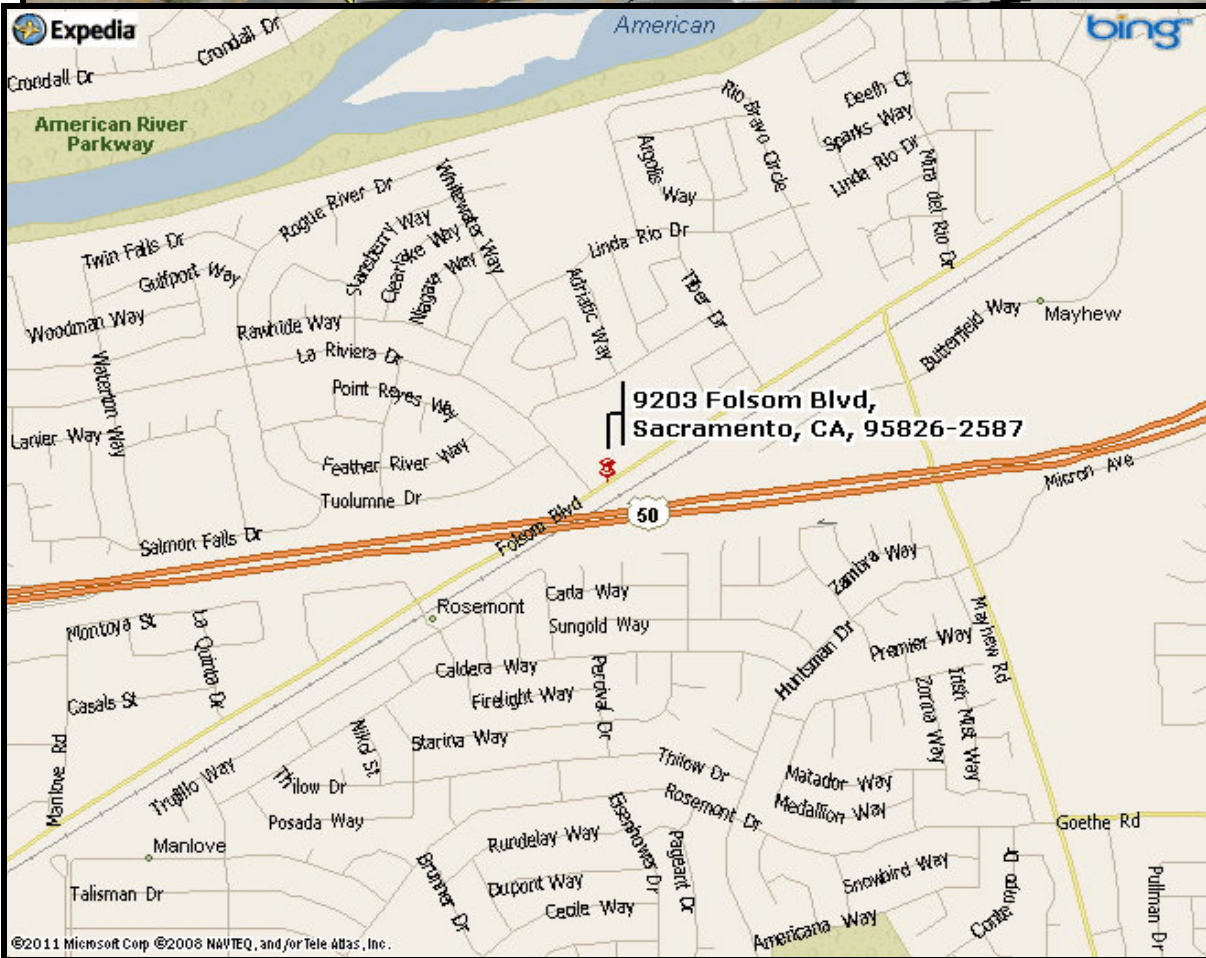
THE VOLLMAN COMPANY, INC.
COMMERCIAL REAL ESTATE BROKERAGE
1900 Point West Way, Suite 161
Sacramento, CA 95815
(916) 929-2000 (916) 929-7857 fax
www.thevollmancompany.com

For Additional Information, Contact:

Dan Mincher
dmincher@thevollmancompany.com

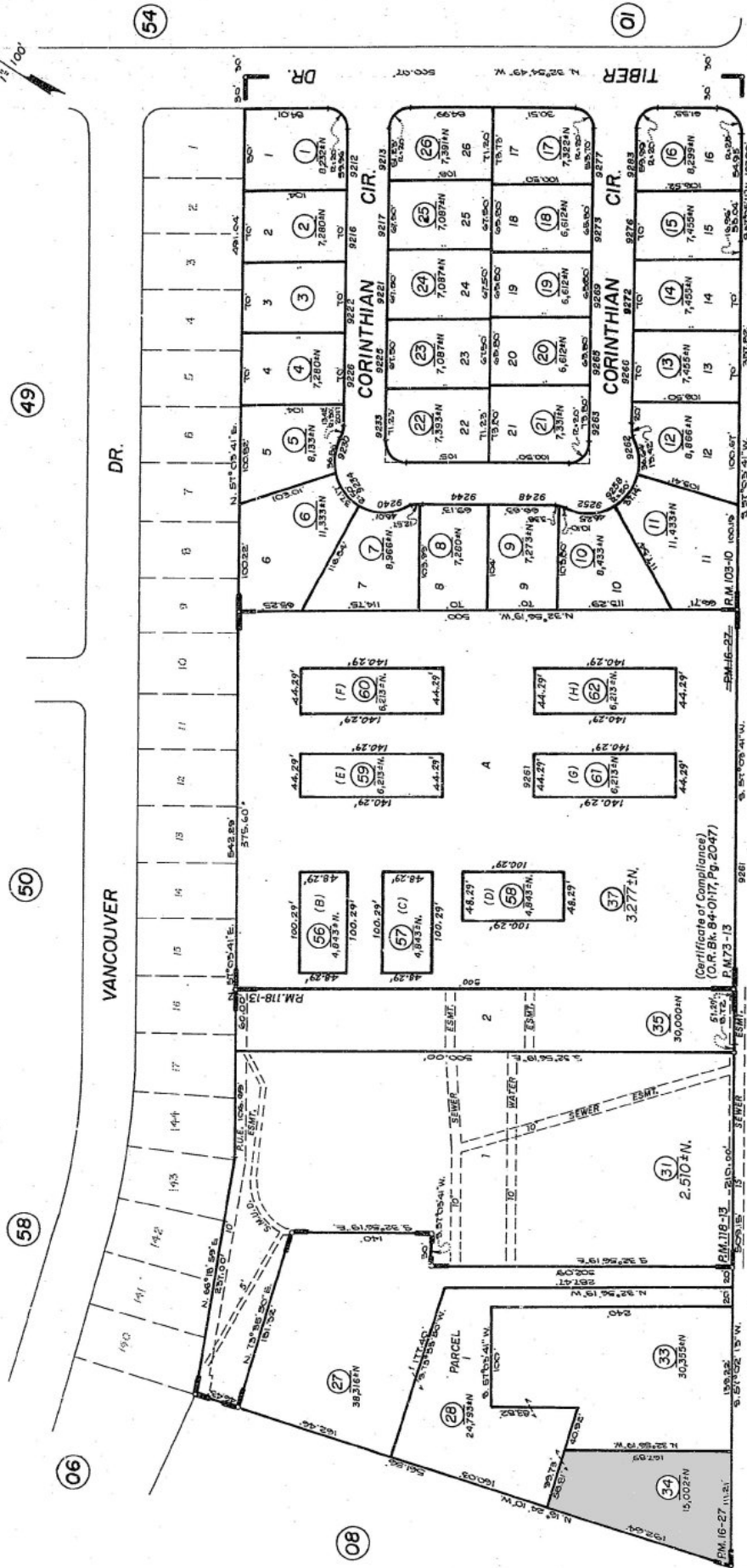
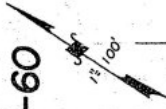
(916) 929-2000

For additional information about this or our other properties please visit our website at: www.thevollmancompany.com
THE ABOVE INFORMATION, WHILE NOT GUARANTEED, HAS BEEN SECURED FROM SOURCES WE BELIEVE TO BE RELIABLE



POR. SEC. 7, T.8N., R.6E., M.D.B.&M.

075-60



BK 068

FOR M/R SEE PG. 01

Assessor's Map Bk. 075, Pg. 60
County of Sacramento, Calif.

College Greens East Unit No. 7, R.M. Bk. 103, Pg. 10 (4-29-76)

FOLSOM

BLVD.

VANCOUVER

DR.

08

06

58

50

49

54

01