

9561 Laguna Springs Dr, Elk Grove, CA 95758

OFFICE SPACE FOR LEASE

Available:

Suite 200 - 1,260 sq. ft.

- 3 private offices
- Large admin. area
- Restroom
- Reception area



APN 116-0840-049
3,237 sq. ft. building
Zoned: LC

\$1.70/psf/month
Modified Gross

**Tenant to pay for metered
utilities and janitorial**

For Additional Information, Contact:

Dennis Vollman - dvollman@thevollmancompany.com

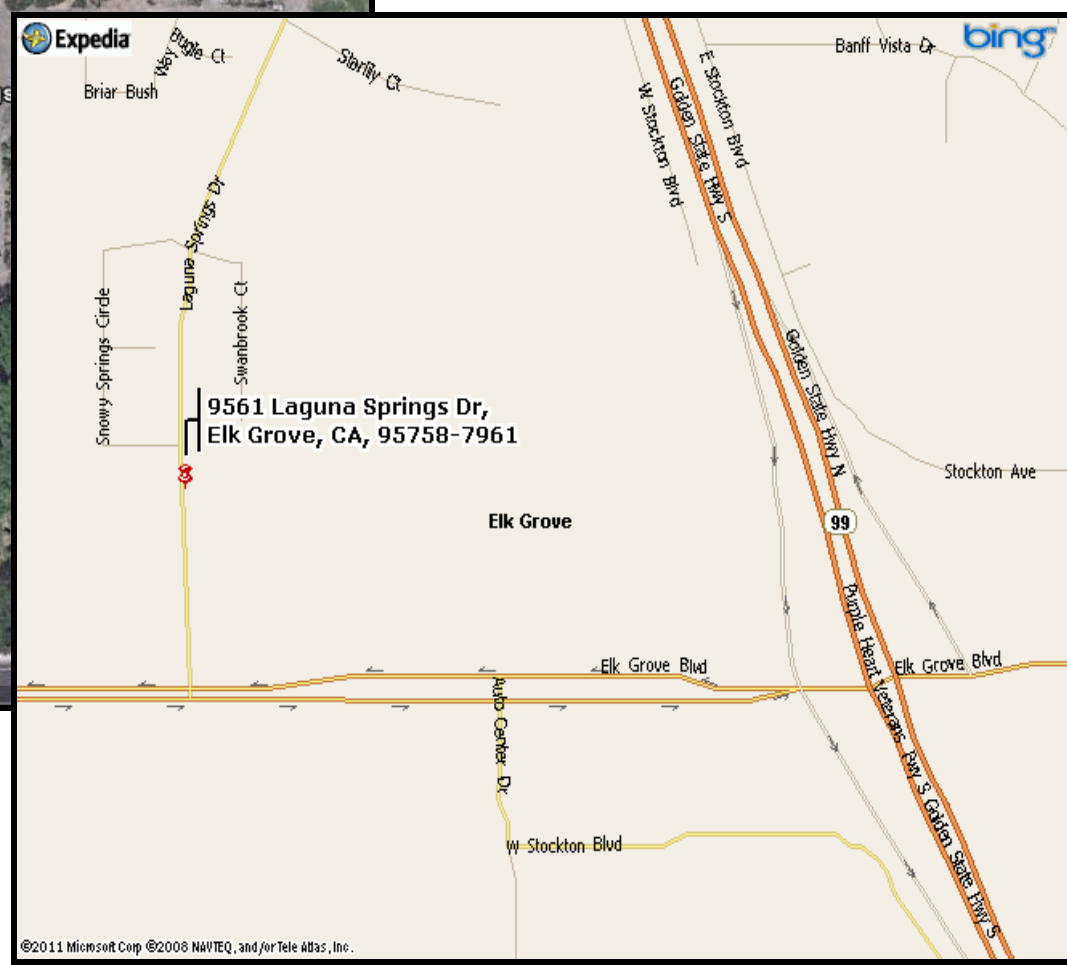
Dan Mincher - dmincher@thevollmancompany.com

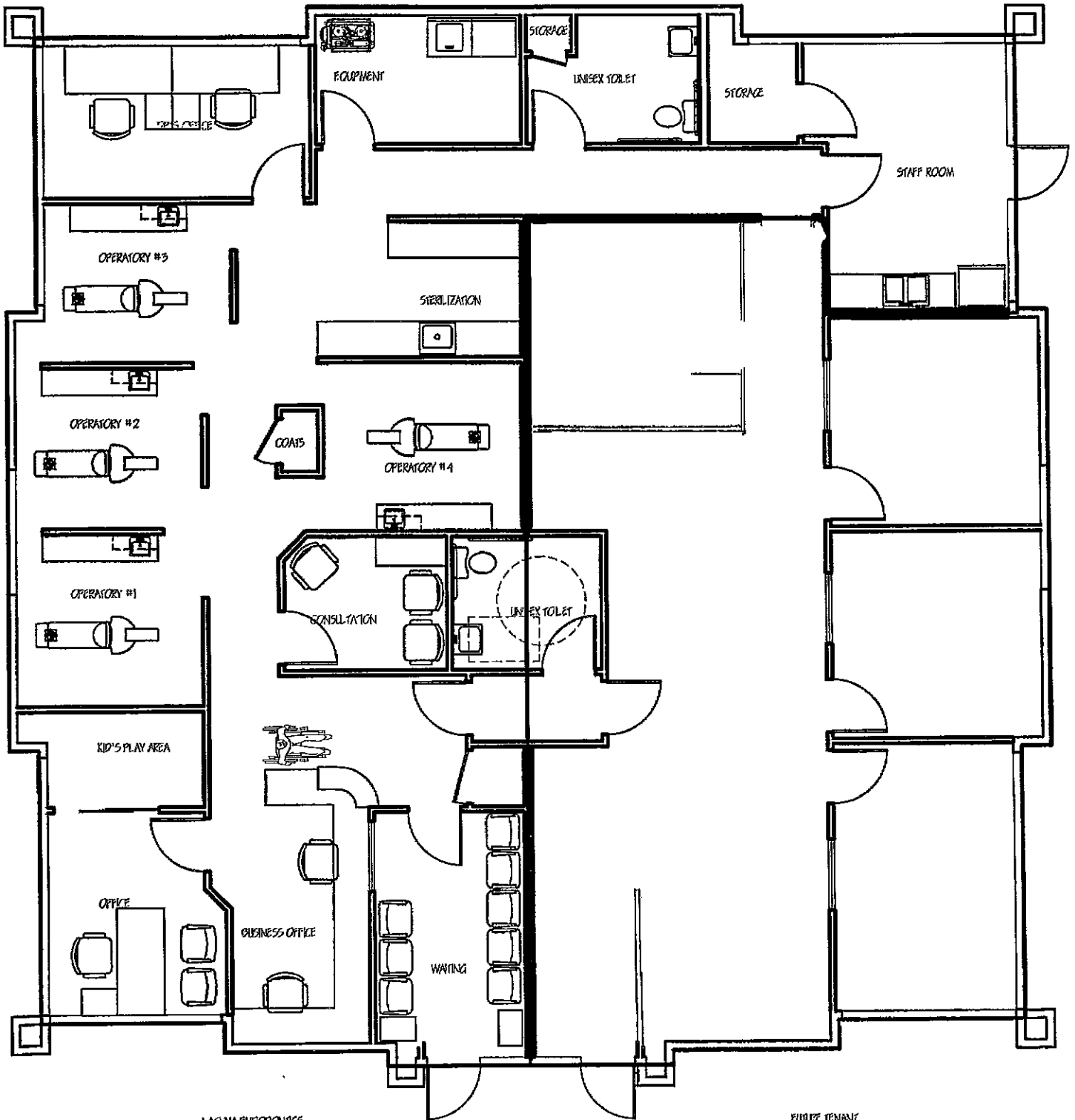
Don Deavens - ddeavens@thevollmancompany.com



THE VOLLMAN COMPANY, INC.
COMMERCIAL REAL ESTATE BROKERAGE
1900 POINT WEST WAY, SUITE 161
SACRAMENTO, CA 95815-4706
916/929-2000 FAX 916/929-7857
www.thevollmancompany.com

THE ABOVE INFORMATION, WHILE NOT GUARANTEED, HAS BEEN SECURED FROM SOURCES WE BELIEVE TO BE RELIABLE



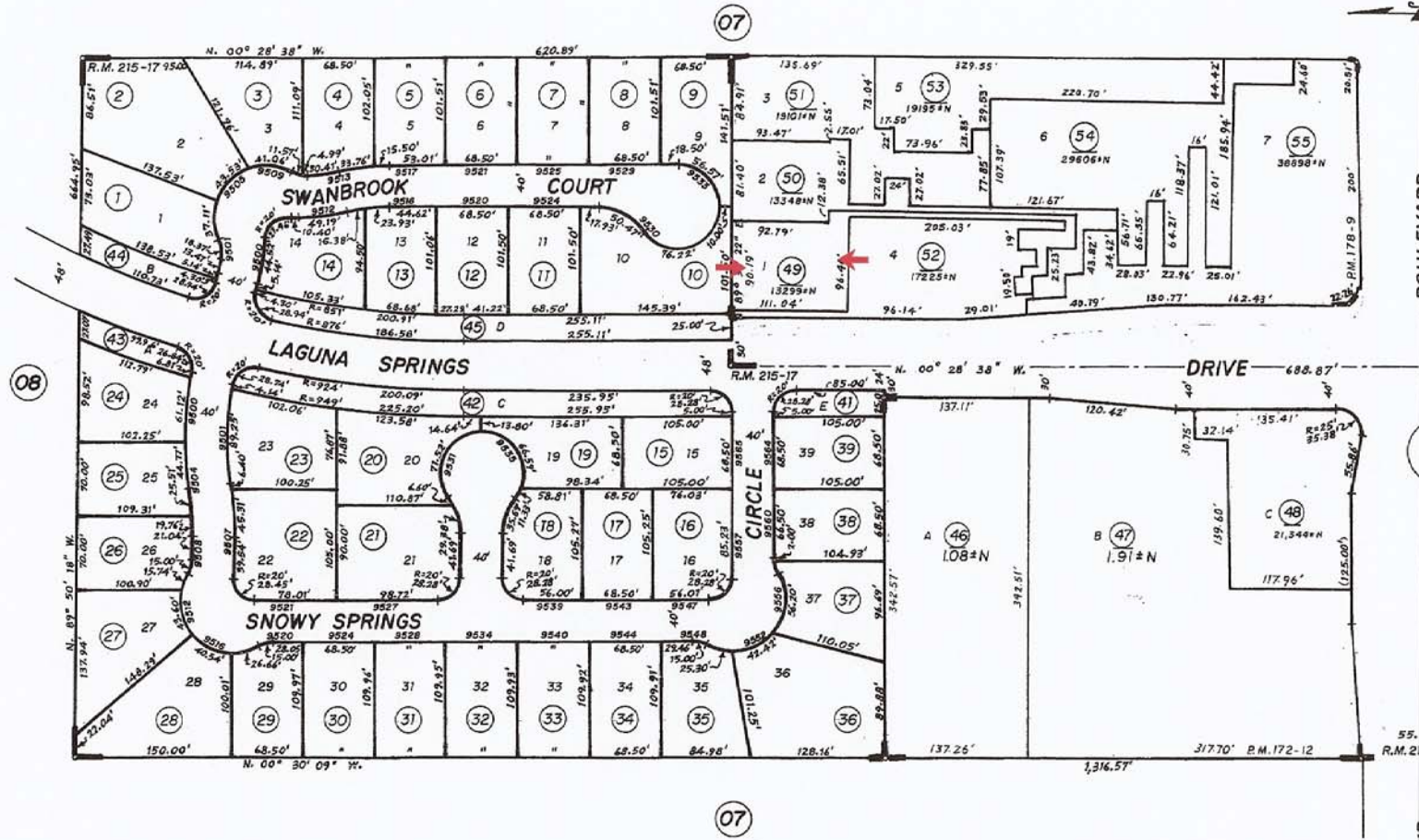


LAGANA ENDODONTICS
1,977 SF.

FUTURE TENANT
1,260 SF.

"As Built" Floor Plan

POR, SE 1/4, SEC. 35, T.7N, R.5E, M.D.B.&M.



OCT 2 2 2004

Assessor's Map Bk. 11
County of Sacramento

Laguna Springs Unit No.3, R.M. Bk.215, Pg.17 (5-8-91)