

RESIDENTIAL DEVELOPMENT LAND

Drollet Way and Baumgart Way, Sacramento, CA 95838



For Further Information,
Contact:

[Bill George](#)

(916) 929-2000 ext. 225

APN 237-0380-009

2.33 acres of residential land

Utilities : Available

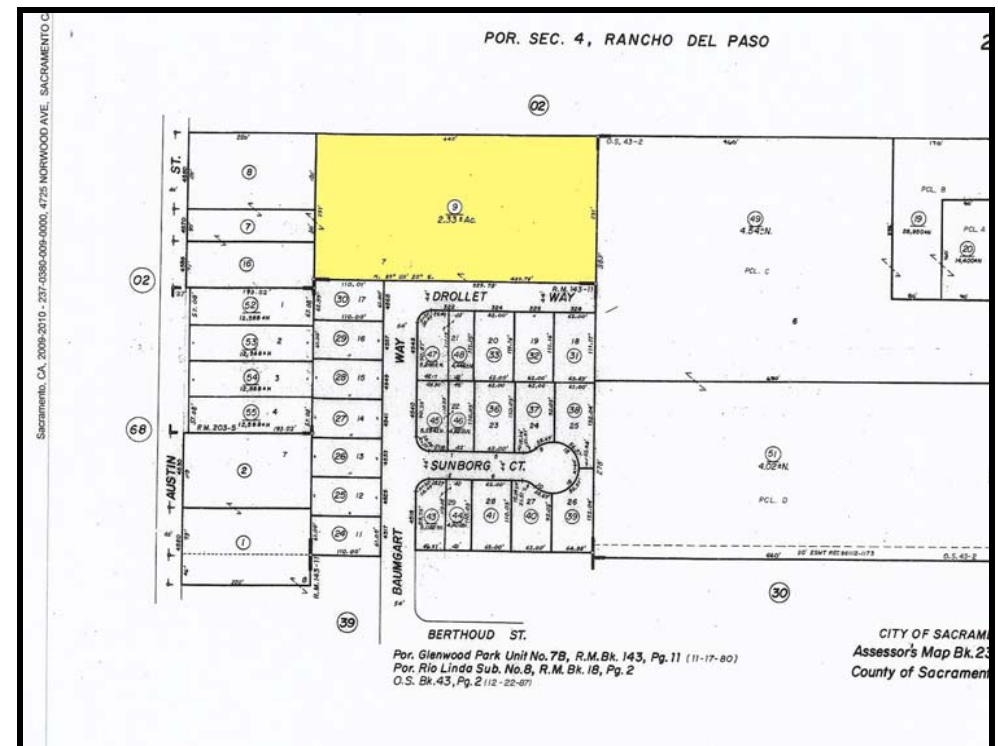
\$420,565.00 all cash or terms agreeable to Seller

Great small infill development property

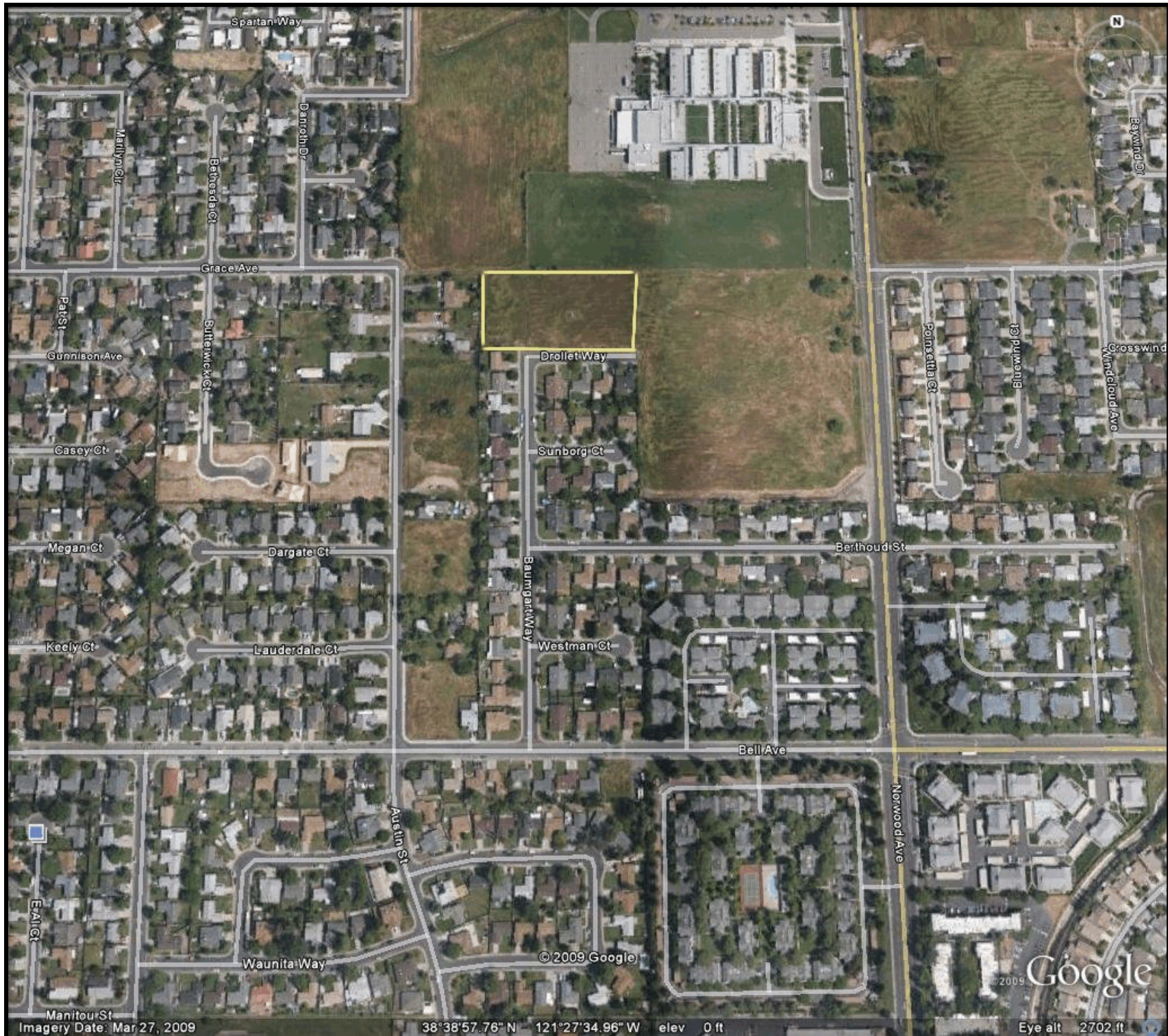


License # 00915268

THE VOLLMAN COMPANY, INC.
COMMERCIAL REAL ESTATE BROKERAGE
1900 POINT WEST WAY, SUITE 161
SACRAMENTO, CA 95815-4706
916/929-2000 FAX 916/929-7857
www.thevollmancompany.com



For additional information about this or our other properties please visit our website at: www.thevollmancompany.com
THE ABOVE INFORMATION, WHILE NOT GUARANTEED, HAS BEEN SECURED FROM SOURCES WE BELIEVE TO BE RELIABLE



Spartan Way

Marilyn Ct

Bethesda Ct

Darwin Dr

Grace Ave

Patsi

Gunnison Ave

Bitterwick Ct

Casey Ct

Megan Ct

Dargate Ct

Koely Ct

Lauderdale Ct

Drollet Way

Sunborg Ct

Baumgart Way

Westman Ct

Berthoud St

Bell Ave

Austin St

Waunita Way

© 2009 Google

N

Raywind Dr

Poinsettia Ct

Blowwind Ct

Windland Ave

Crosswind

Norwood Ave

Manitou St

Imagery Date: Mar 27, 2009

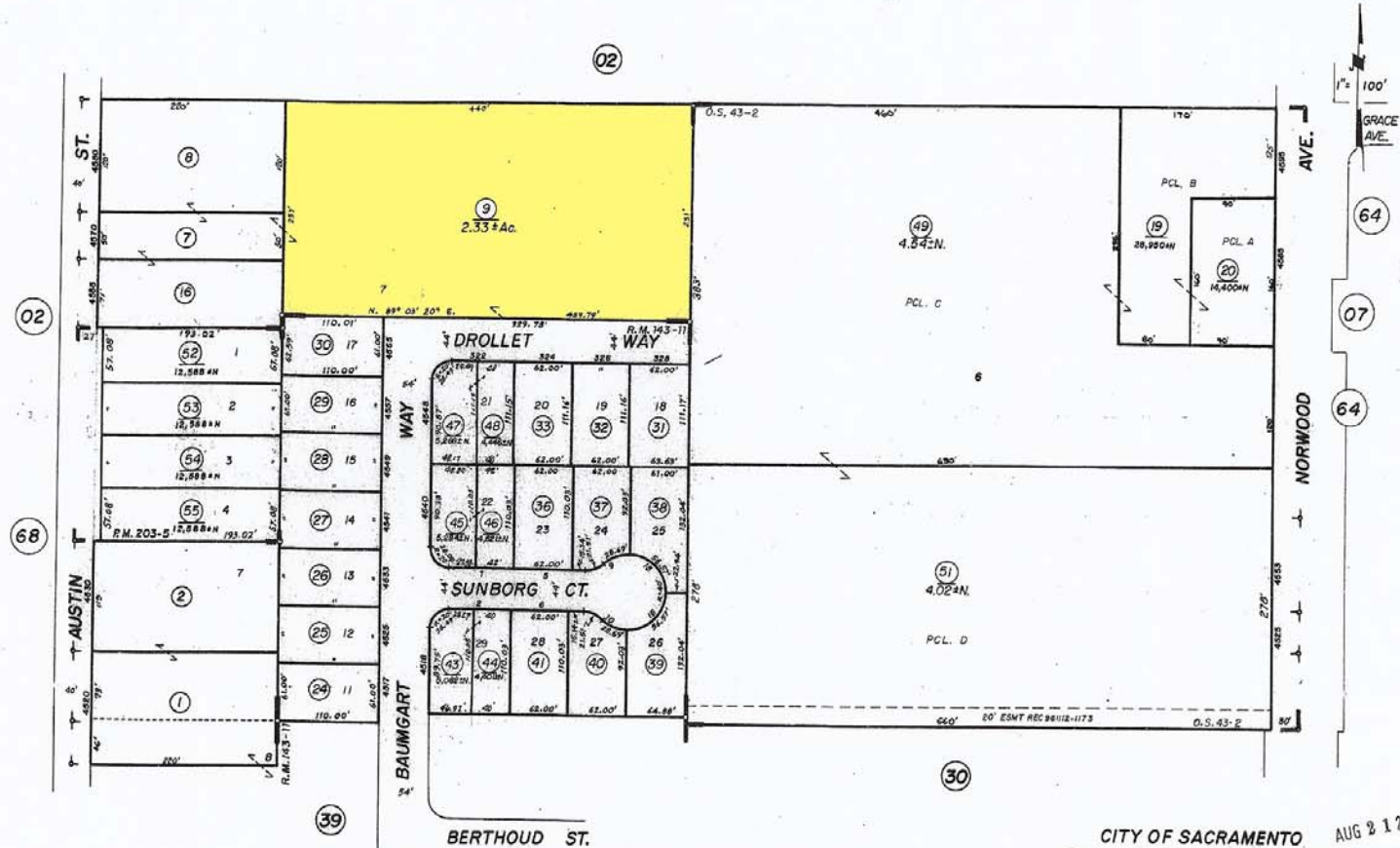
38°38'57.76" N 121°27'34.96" W elev 0 ft

© 2009 Google

Eye alt 2702 ft

POR. SEC. 4, RANCHO DEL PASO

237-38



BERTHOUD ST.
 Por. Glenwood Park Unit No. 7B, R.M. Bk. 143, Pg. 11 (11-17-80)
 Por. Rio Linda Sub. No. 8, R.M. Bk. 18, Pg. 2
 O.S. Bk. 43, Pg. 2 (12-22-87)

CITY OF SACRAMENTO AUG 2 1 2008
 Assessor's Map Bk. 237, Pg. 38
 County of Sacramento, Calif.

