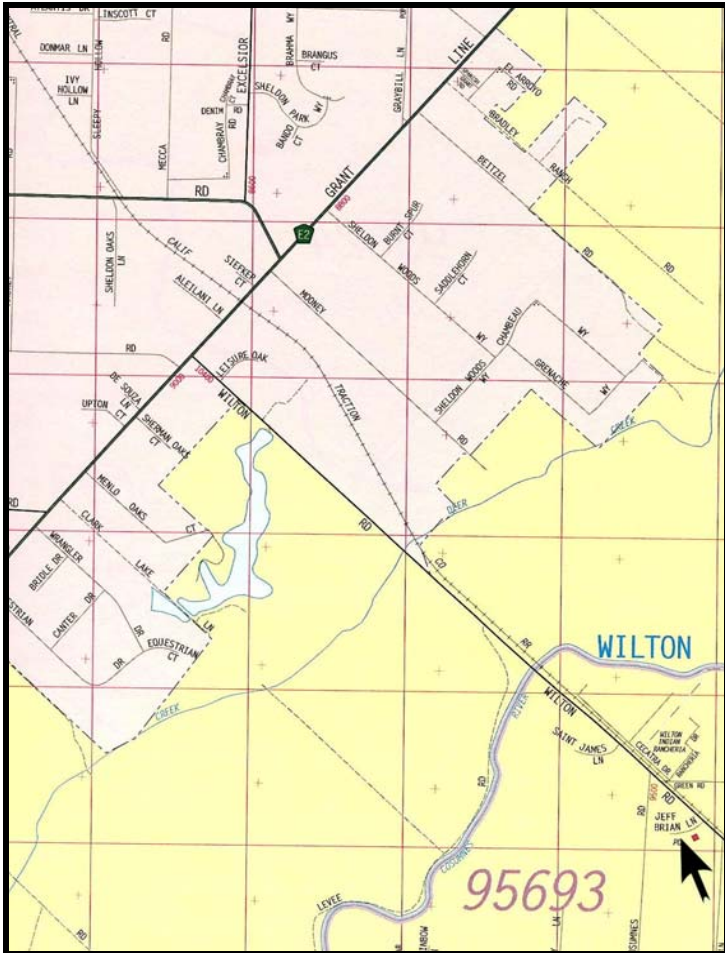


GENERAL COMMERCIAL LAND FOR SALE

Jeff Brian Lane, Wilton CA 95693



1.03 acres
Zoned GC, General Commercial
APN 134-0160-027

Water: Well
Electric: SMUD
Sewer: Septic

Curbs, gutters and streets are in.

\$295,000.00 New Price!
Cash or terms agreeable to Seller.

**25% Price
Reduction!**

This is a great small commercial lot for a user to build a multi-use building. It's quiet and peaceful in this part of Sacramento County.



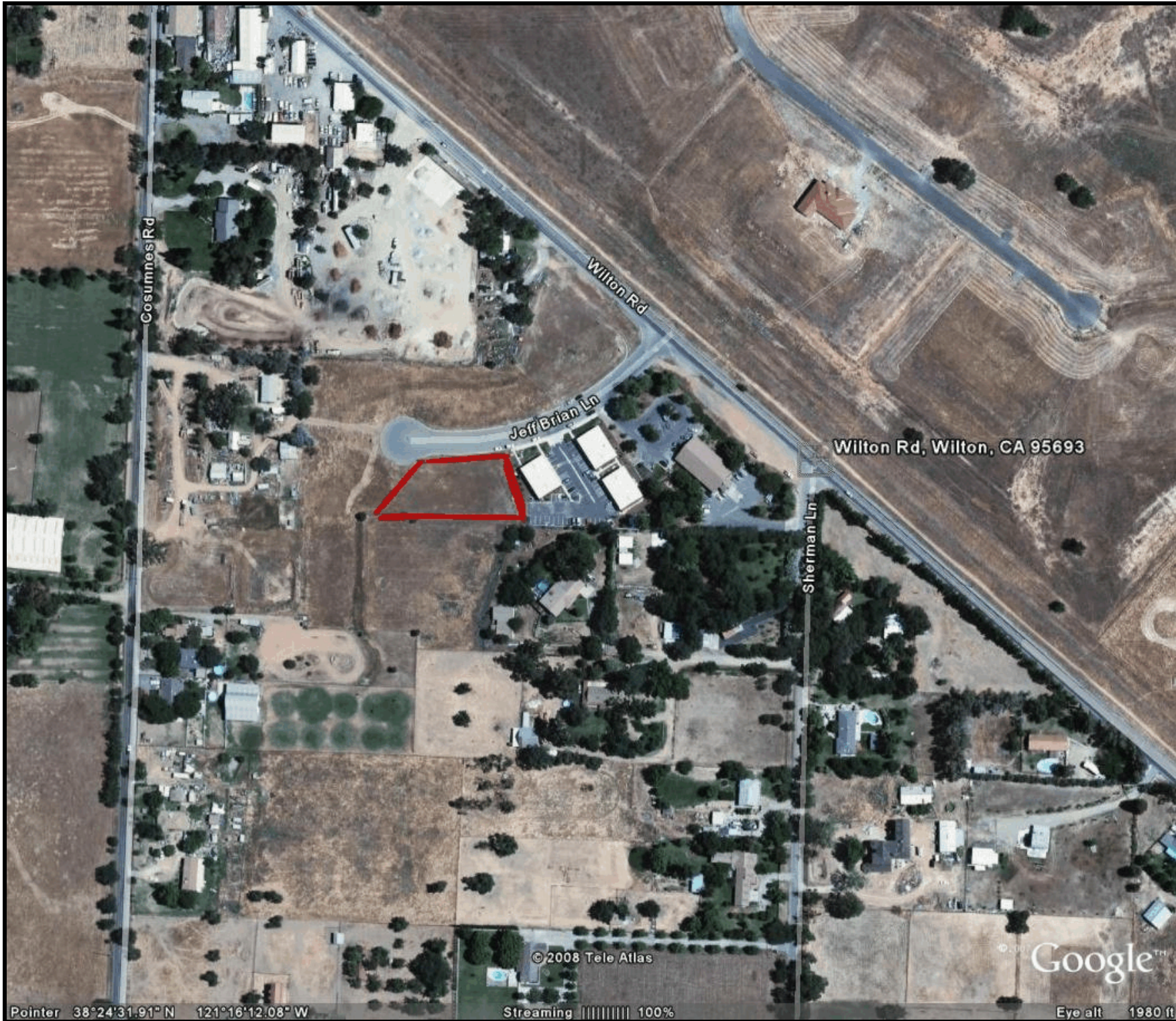
THE VOLLMAN COMPANY, INC.
COMMERCIAL REAL ESTATE BROKERAGE
1900 POINT WEST WAY, SUITE 161
SACRAMENTO, CA 95815-4706
916/929-2000 FAX 916/929-7857

FOR FURTHER INFORMATION, CONTACT:

BILL GEORGE
bgeorge@thevollmancompany.com

(916) 929-2000 ext. 225

For additional information about this or our other properties please visit our website at: www.thevollmancompany.com
THE ABOVE INFORMATION, WHILE NOT GUARANTEED, HAS BEEN SECURED FROM SOURCES WE BELIEVE TO BE RELIABLE



Cosumnes Rd

Wilton Rd

Jeff Brian Ln

Sherman Ln

Wilton Rd, Wilton, CA 95693

© 2008 Tele Atlas

Google

Pointer 38°24'31.91" N 121°16'12.08" W

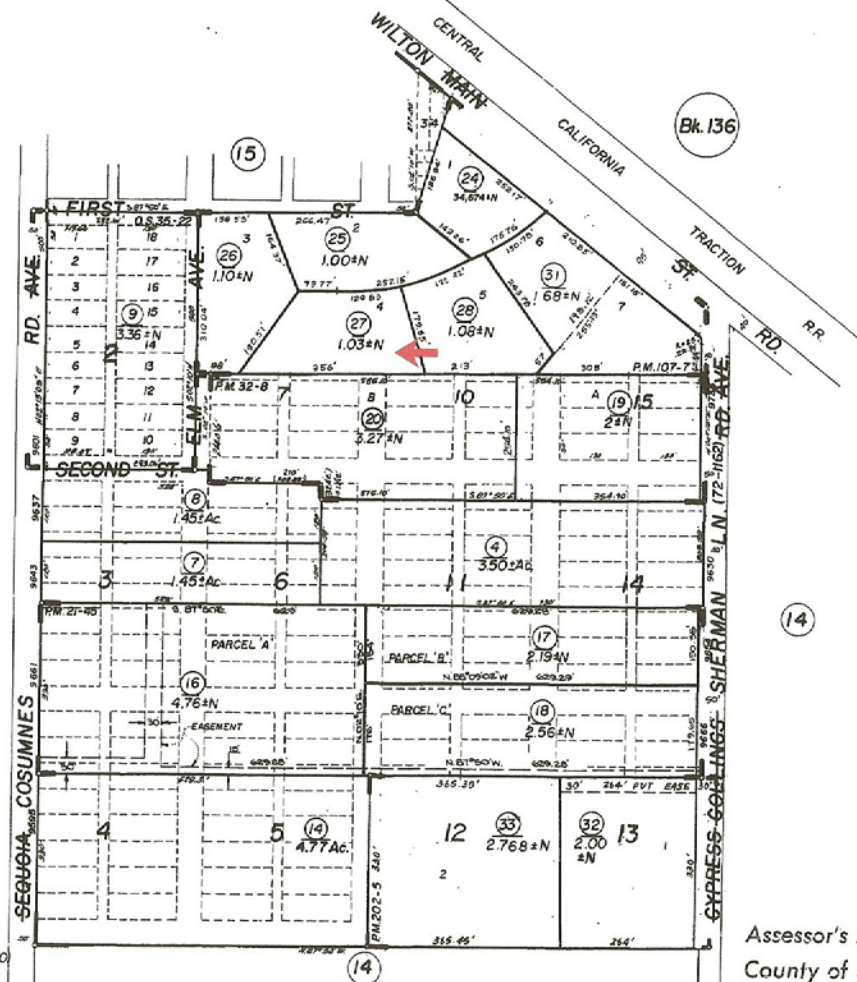
Streaming 100%

Eye alt 1980 ft

POR. SEC'S 1 & 36, T.6&7N., R.6E., M.D.B. & M.
 (PROJ. INTO RANCHO DE SAN JON DE LOS MOQUELUMNOS)

Tax Area Code

134-16



Official Survey Bk. 35, Pg. 22 (9-2-80)
 Wilton, R.M. Bk. 13, Pg. 19

NOTE—Assessor's Block Numbers Shown in Ellipses.
 Assessor's Parcel Numbers Shown in Circles.

Assessor's Map Bk. 134—Pg. 16
 County of Sacramento, Calif.

DEC. 23 2007

